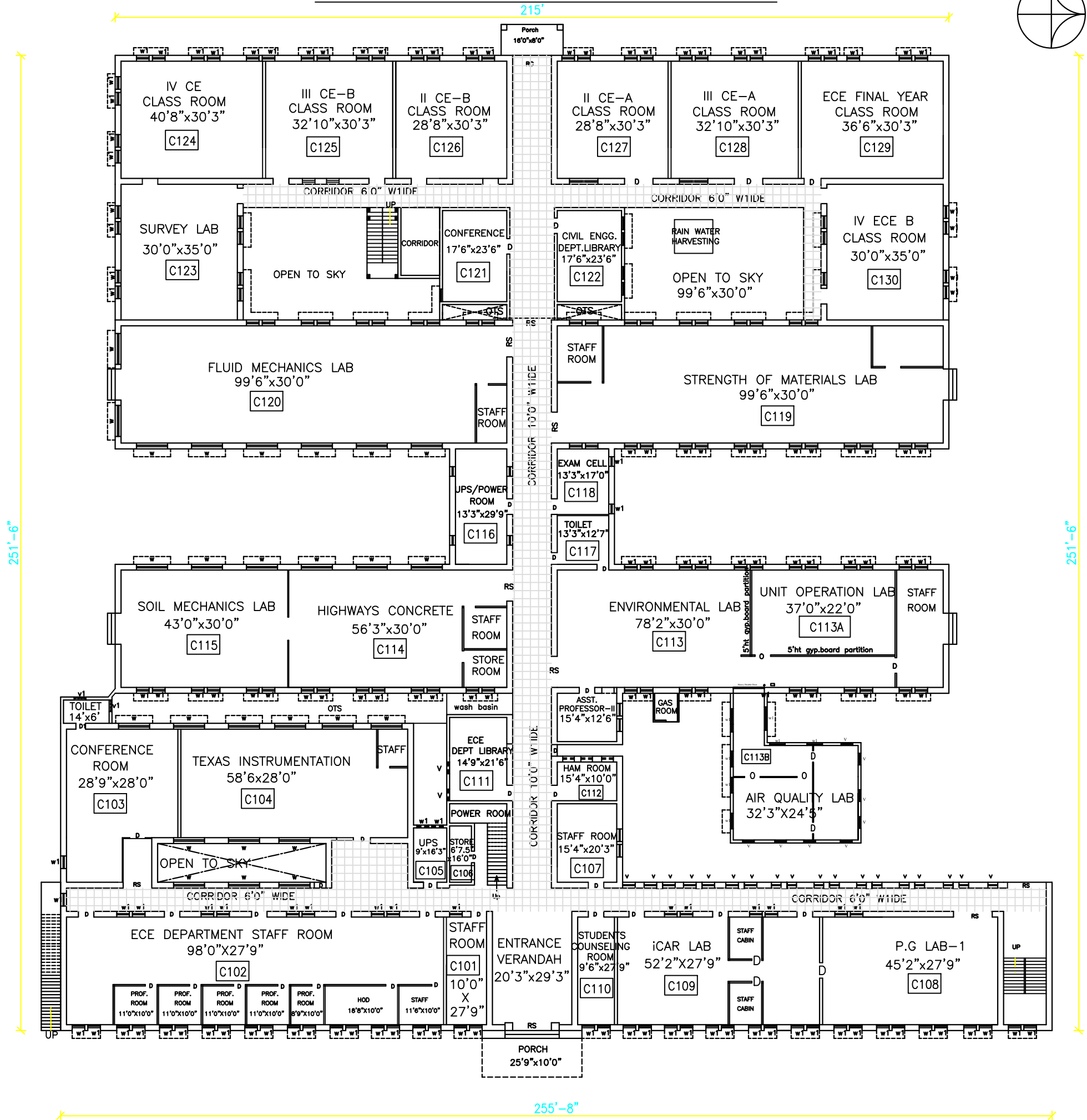
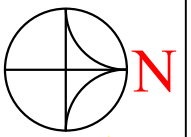


# C BLOCK-EXISTING GROUND FLOOR PLAN



**AREA DETAILS:-**

**BUILDUP AREA = 47451.48sq.ft 4408.38sq.m**

- a). a1)ACADEMIC AREA = 24751.56sq.ft 2299.49sq.m
- a). a2)ACADEMIC AREA = 706.84sq.ft 65.66sq.m
- b). ADMINISTRATIVE AREA= 5240.42sq.ft 486.65sq.m
- c). AMENITIES = 680.54sq.ft 63.22sq.m
- d). CIRCULATION AREA = 8395.46sq.ft 779.96sq.m

**a). ACADEMIC AREA:**

- a1). CLASS, TUTORIAL, LAB, RESEARCH LAB, WORKSHOP, DRAWING HALL, COUNSELING ROOM
- a2). SEMINAR HALL, LIBRARY, READING ROOM.

**b). ADMINISTRATIVE AREA:**

CONFERENCE , OFFICE, PRL ROOM, CHAIRMAN, STAFF ROOM, HOD'S ROOM/DEPT.OFFICE, ADMIN OFFICE, COE OFFICE, STORE, BOARD ROOM,HOUSE KEEPING, HOSTEL OFFICE,SECURITY AREA

**c). AMENITIES:**

GUEST HOUSE, HOSTEL, TOILETS, POWER HOUSE, ESTATE OFFICE, HOSPITAL, MANDAPAM, CORE, GYM, MUSIC CLUB, NSS, NCC, TAMIL MANDRAM, STUDENT ACTIVITIES

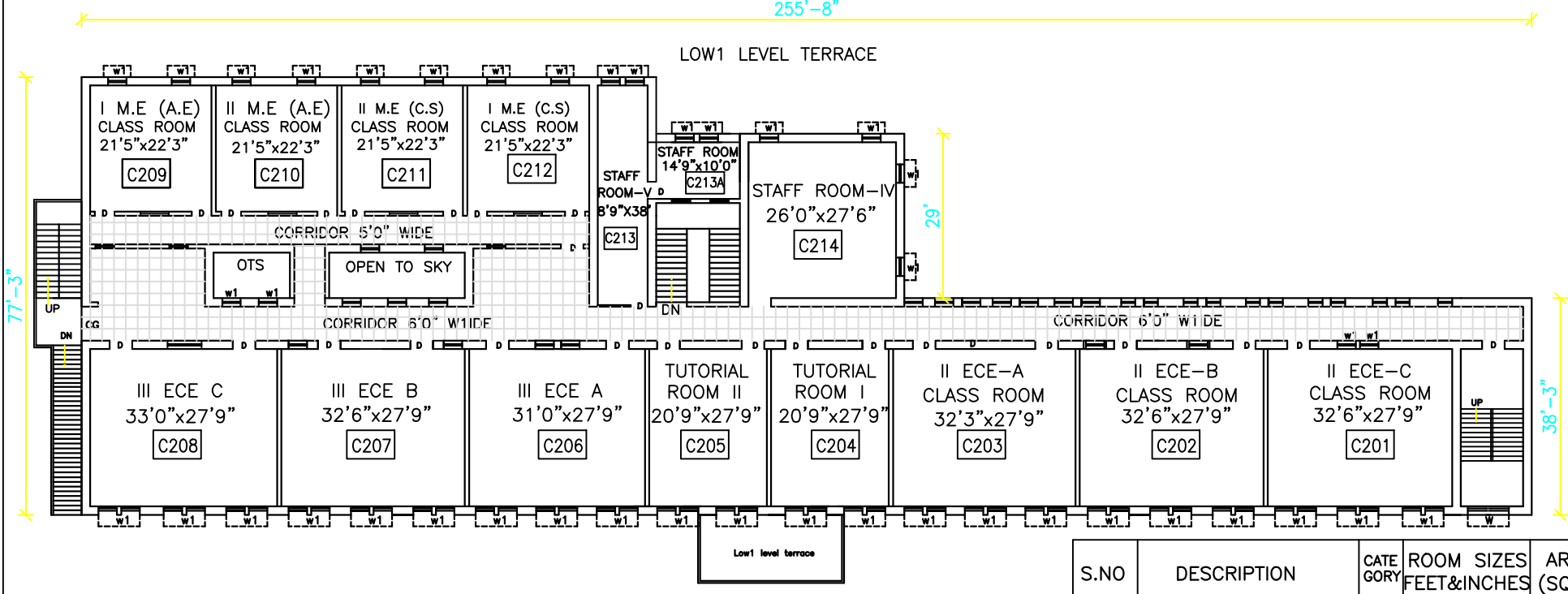
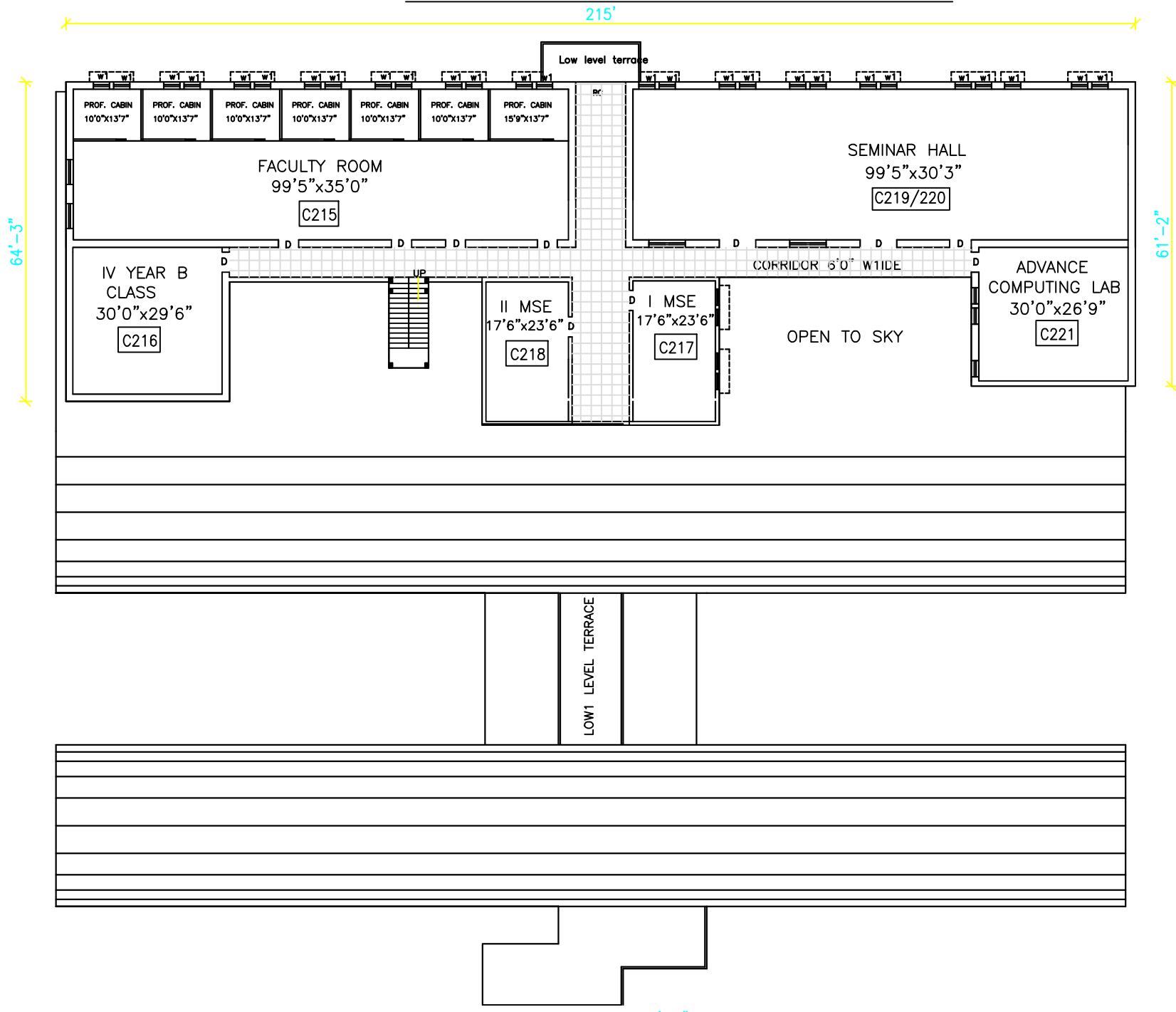
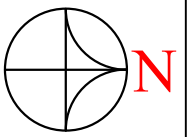
**d). CIRCULATION AREA:**

CORRIDORS, PASSAGE, STAIRCASE, VERANDAH, PORTICO, OTS

S.NO	DESCRIPTION	CATE GORY	ROOM SIZES FEET&INCHES	AREA (SQ.FT)	AREA (SQ.M)	S.NO	DESCRIPTION	CATE GORY	ROOM SIZES FEET&INCHES	AREA (SQ.FT)	AREA (SQ.M)
C101	STAFF ROOM	b	10'0"x27'9"	279.00	25.92	C118	EXAM CELL	b	13'3"x17'0"	223.59	20.77
C102	ECE DEPARTMENT STAFF	b	98'0"x27'9"	2719.00	252.74	C119	STRENGTH OF MATERIALS	a1	99'6"x30'0"	3009.88	279.62
C103	CONFERENCE ROOM	b	28'9"x28'0"	1058.00	98.29	C120	FLUID MECHANICS LAB	a1	99'6"x30'0"	3009.88	279.62
C104	TEXAS INSTRUMENTS	a1	58'6"x28'0"	1638.00	152.17	C121	CONFERENCE	b	17'6"x23'6"	389.71	36.20
C105	UPS ROOM	C	9'0"x16'3"	120.17	11.16	C122	CIVIL ENGG.DEPT.LIBRARY	a2	17'6"x23'6"	389.71	36.20
C106	STORE ROOM	b	6'7½"x16'	81.56	7.57	C123	SURVEY LAB	a1	30'0"x35'0"	81.56	7.57
C107	STAFF ROOM	b	15'4"x20'3"	310.50	28.85	C124	IV CE CLASS ROOM	a1	40'8"x30'3"	1104.53	102.61
C108	P.G. LAB-1	a1	45'2"x27'9"	1253.19	116.46	C125	III CE-B CLASS ROOM	a1	32'10"x30'3"	993.01	92.25
C109	iCAR LAB	a1	52'2"x27'9"	1447.44	134.52	C126	II CE-B CLASS ROOM	a1	28'8"x30'3"	866.97	80.54
C110	STUDENTS COUNSELING	a1	9'6"x27'9"	263.63	24.49	C127	II CE-A CLASS ROOM	a1	28'8"x30'3"	864.47	80.31
C111	DEPT LIBRARY	a2	14'9"x21'6"	317.13	29.46	C128	III CE-A CLASS ROOM	a1	32'10"x30'3"	993.01	92.25
C112	HAM ROOM	a1	14'9"x21'6"	153.33	14.24	C129	ECE FINAL YEAR CLASS	a1	36'6"x30'3"	1107.02	102.84
C113	ENVIRONMENTAL LAB	a1	78"2"x30'0"	3009.88	279.62	C130	IV ECE B CLASS ROOM	a1	30'0"x35'0"	1050.00	97.54
C113A	UNIT OPERATION	a1									
C113B	INSTRUMENTATION & AIR	a1	32'3"x24'5"	788.20	73.25						
C113C	QUALITY	a1									
C114	HIGHWAYS CONCRETE	a1	56'3"x30'0"	1701.56	158.08						
C115	SOIL MECHANICS LAB	a1	43'0"x30'0"	1300.75	120.84						
C116	UPS/POWER ROOM	C	13'3"x29'9"	394.19	36.62						
C117	TOILET	C	13'3"x12'7"	166.18	15.43						

DATE 06.03.2020

# C BLOCK-EXISTING FIRST FLOOR PLAN



**AREA DETAILS:-**

**BUILDUP AREA = 27465sq.ft 2551.58sq.m**

a). a1)ACADEMIC AREA = 11048.00sq.ft 1026.77sq.m

a). a2)ACADEMIC AREA = 3009.88sq.ft 279.62sq.m

b). ADMINISTRATIVE AREA= 4757.38sq.ft 442.14sq.m

d). CIRCULATION AREA = 5272.06sq.ft 489.79sq.m

**a). ACADEMIC AREA:**

a1). CLASS, TUTORIAL, LAB, RESEARCH LAB, WORKSHOP, DRAWING HALL, COUNSELING ROOM

a2). SEMINAR HALL, LIBRARY, READING ROOM.

**b). ADMINISTRATIVE AREA:**

CONFERENCE , OFFICE, PRL ROOM, CHAIRMAN, STAFF ROOM, HOD'S ROOM/DEPT.OFFICE, ADMIN OFFICE, COE OFFICE, STORE, BOARD ROOM,HOUSE KEEPING, HOSTEL OFFICE,SECURITY AREA

**c). AMENITIES:**

GUEST HOUSE, HOSTEL, TOILETS, POWER HOUSE, ESTATE OFFICE, HOSPITAL, MANDAPAM, CORE, GYM, MUSIC CLUB, NSS, NCC, TAMIL MANDRAM, STUDENT ACTIVITIES

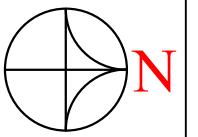
**d). CIRCULATION AREA:**

CORRIDORS, PASSAGE, STAIRCASE, VERANDAH, PORTICO, OTS

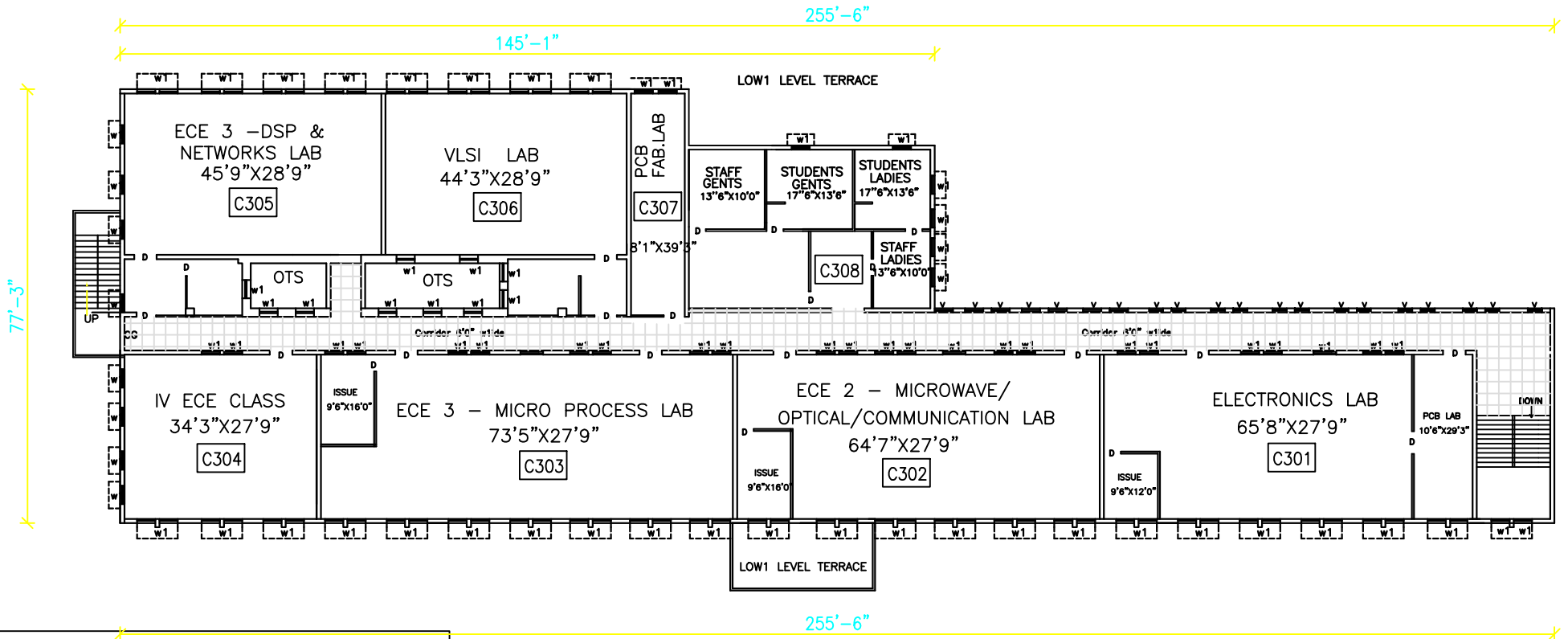
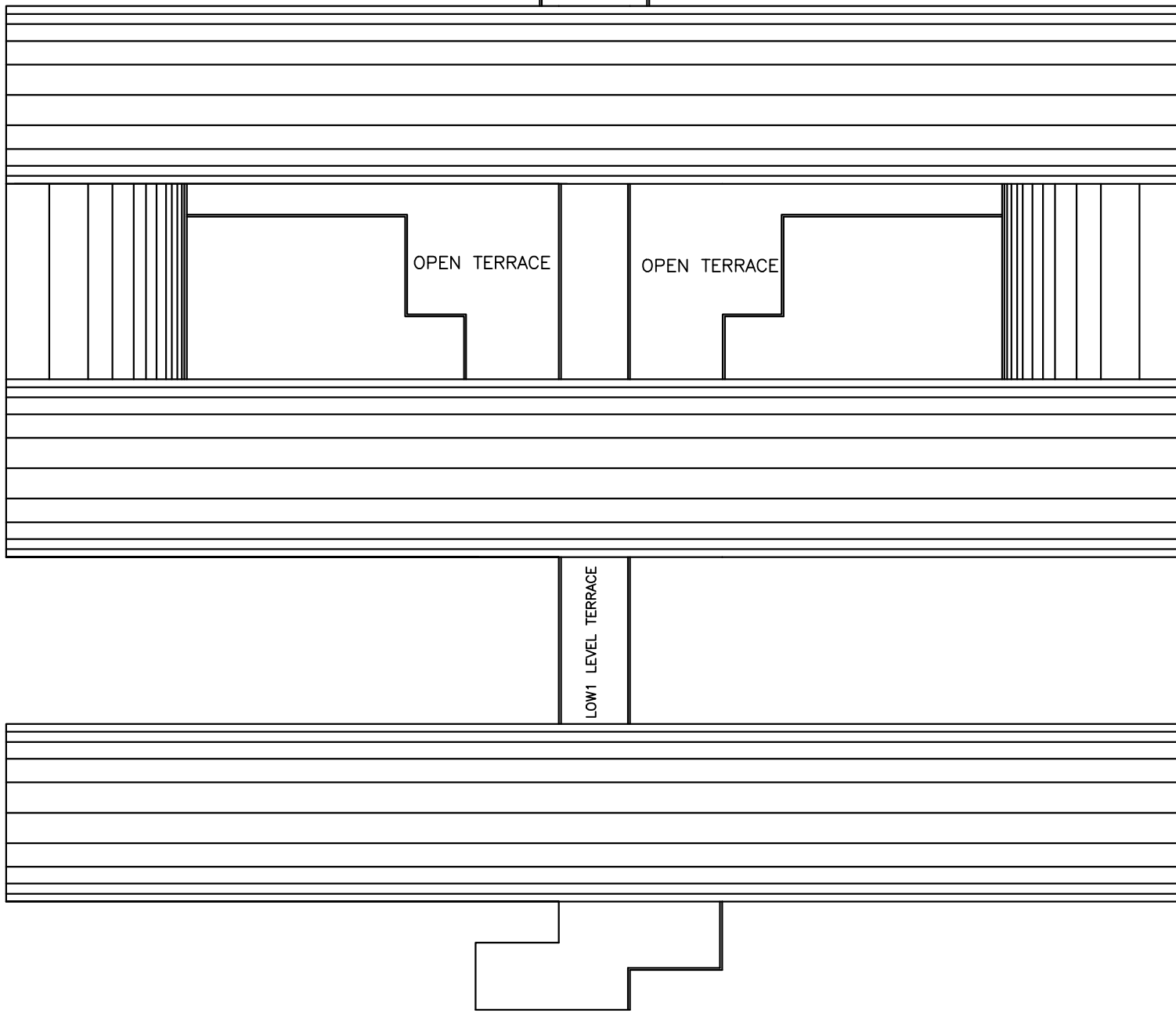
S.NO	DESCRIPTION	CATE GORY	ROOM SIZES FEET&INCHES	AREA (SQ.FT)	AREA (SQ.M)
C201	II ECE-C CLASS ROOM	a1	32'6"x27'9"	901.88	83.78
C202	II ECE-B CLASS ROOM	a1	32'6"x27'9"	899.58	83.57
C203	II ECE-A CLASS ROOM	a1	32'6"x27'9"	892.62	82.93
C204	TUTORIAL ROOM I	a1	20'9"x27'9"	575.81	53.49
C205	TUTORIAL ROOM II	a1	20'9"x27'9"	575.81	53.49
C206	III ECE A CLASS ROOM	a1	31'0"x27'9"	860.25	79.92
C207	III ECE B CLASS ROOM	a1	32'6"x27'9"	897.25	83.36
C208	III ECE C CLASS ROOM	a1	33'0"x27'9"	915.75	85.07
C209	I M.E. (A.E) CLASS	a1	21'5"x22'3"	476.52	44.27
C210	II M.E. (A.E) CLASS	a1	21'5"x22'3"	476.52	44.27
C211	II M.E. (C.S) CLASS	a1	21'5"x22'3"	476.52	44.27
C212	I M.E. (C.S) CLASS	a1	21'5"x22'3"	476.52	44.27
C213	STAFF ROOM-V	b	8'9"x25'0"	221.41	20.56
C213A	STAFF ROOM	b	14'9"x10'0"	147.50	13.70
C214	STAFF ROOM-IV	b	26'0"x27'6"	715.00	66.43
C215	FACULTY ROOM	b	99'5"x30'0"	3009.88	279.62
C216	TUTORIAL CLASS-1	a1	30'0"x29'6"	885.00	82.22
C217	I MSE CLASS	a1	17'6"x23'6"	468.33	43.51
C218	II MSE CLASS	a1	17'6"x23'6"	464.32	43.14
C219	SEMINAR HALL	a2	99'5"x30'3"	3009.88	279.62
C220					
C221	ADVANCE COMPUTING LAB	a1	30'0"x26'9"	805.32	74.82

DATE 06.03.2020

# C BLOCK-EXISTING SECOND FLOOR PLAN



LOW1 LEVEL  
TERRACE



## AREA DETAILS:-

**BUILDUP AREA = 14815.78sq.ft 1376.43sq.m**

a). a1)ACADEMIC AREA = 9510.32sq.ft 883.53sq.m

b). ADMINISTRATIVE AREA= 247.39sq.ft 22.98sq.m

c). AMENITIES = 1214.75sq.ft 112.85sq.m

d). CIRCULATION AREA = 2333.36sq.ft 216.77sq.m

### a). ACADEMIC AREA:

a1). CLASS, TUTORIAL, LAB, RESEARCH LAB, WORKSHOP, DRAWING HALL, COUNSELING ROOM

a2). SEMINAR HALL, LIBRARY, READING ROOM.

### b). ADMINISTRATIVE AREA:

CONFERENCE , OFFICE, PRL ROOM, CHAIRMAN, STAFF ROOM, HOD'S ROOM/DEPT.OFFICE, ADMIN OFFICE, COE OFFICE, STORE, BOARD ROOM,HOUSE KEEPING, HOSTEL OFFICE,SECURITY AREA

### c). AMENITIES:

GUEST HOUSE, HOSTEL, TOILETS, POWER HOUSE, ESTATE OFFICE, HOSPITAL, MANDAPAM, CORE, GYM, MUSIC CLUB, NSS, NCC, TAMIL MANDRAM, STUDENT ACTIVITIES

### d). CIRCULATION AREA:

CORRIDORS, PASSAGE, STAIRCASE, VERANDAH, PORTICO, OTS

DATE 06.03.2020

S.NO	DESCRIPTION	CATE GORY	ROOM SIZES FEET&INCHES	AREA (SQ.FT)	AREA (SQ.M)
C301	ECE 1 - ELECTRONICS LAB	a1	65'8"X27'9"	1920.55	178.42
C302	ECE 2 - MICROWAVE/OPTICAL/COMMUNICATIO LAB	a1	64'7"X27'9"	1888.96	175.49
C303	ECE3-MICRO PROCESS LAB	a1	73'5"X27'9"	2147.44	199.50
C304	IV ECE CLASS ROOM	a1	34'3"X27'9"	1001.81	93.07
C305	ECE3-DSP&NETWORKS LAB	a1	45'9"X28'9"	1315.31	122.24
C306	VLSI LAB	a1	44'3"X28'9"	1272.18	118.23
C307	STAFF ROOM	b	8'1"X39'3"	317.92	29.54
C308	TOILET	c		1214.75	112.85